



PEDESTRIAN QUALITY NEEDS
www.walkeurope.org

Assessing Pedestrians' Needs - progress

The European COST 358 PQN
project



COST 358 Pedestrians' Quality Needs

1



COST 358
Pedestrians' Quality Needs

Outline

- Introduction
- Maturity of pedestrian quality policy
- Systems approach process
- Steps in policy making
- Some preliminary findings



October, 30th 2008

Assessing Pedestrians' Quality Needs

2



COST 358
Pedestrians' Quality Needs

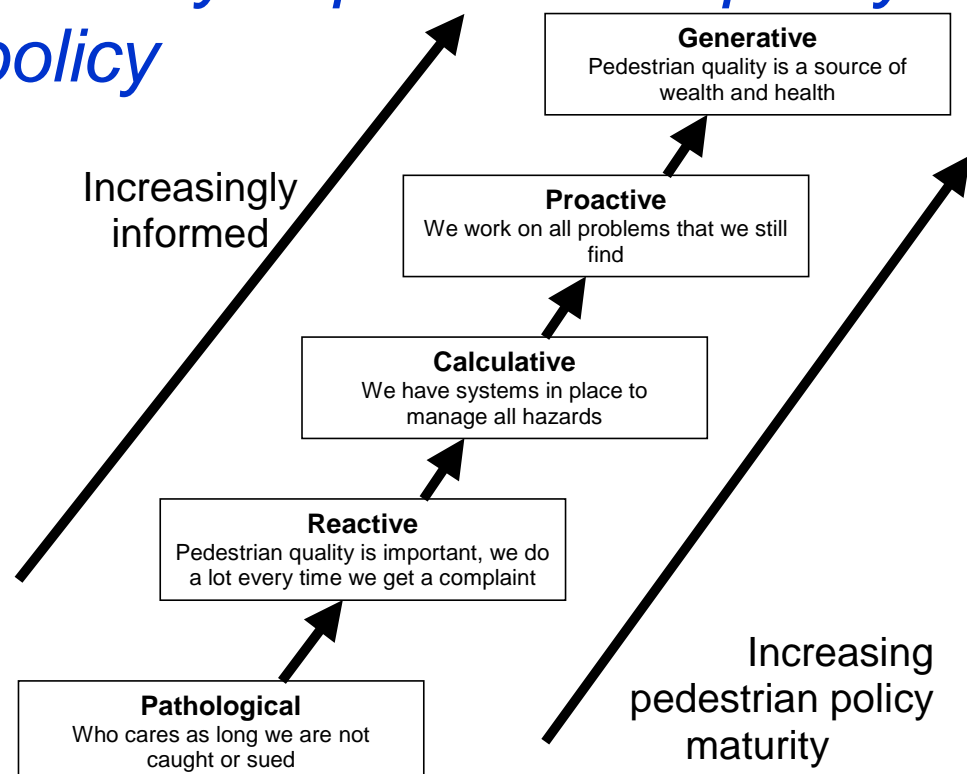
Introduction

- From problem oriented to quality oriented
- COST 358 PQN started Nov. 06:
 - 20 countries, 49 institutes, 70+ researchers
- 3 perspectives:
 - Functionality
 - Perception
 - Durability and Future Prospects
- Introduction at ICTCT Valencia and WALK21 Toronto.
- 'Work in progress'
- What will output of PQN be?



COST 358
Pedestrians' Quality Needs

Maturity of pedestrian quality policy

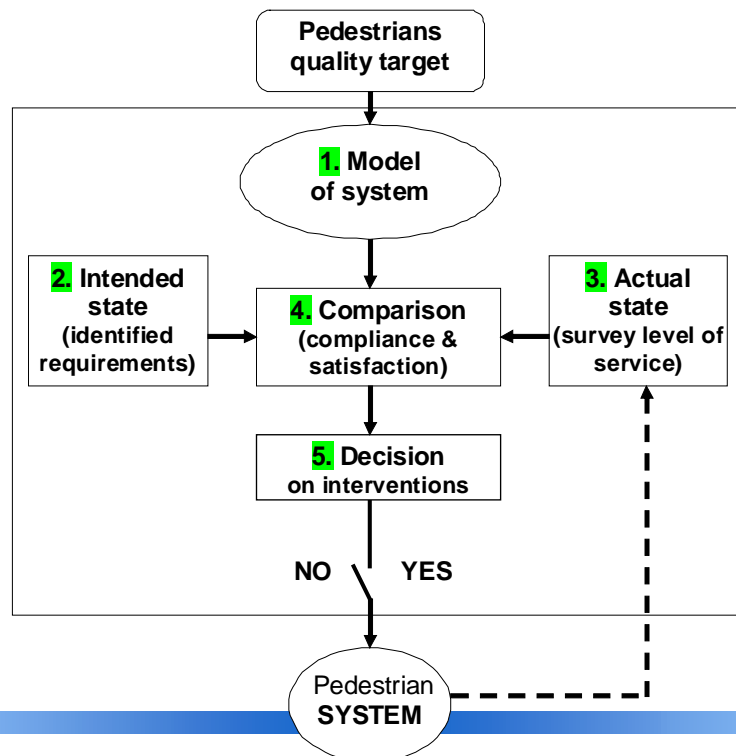




COST 358

Pedestrians' Quality Needs

Systems approach process



COST 358

Pedestrians' Quality Needs

Steps in policy making

1. Modeling the system	Insight in working of the PQ system
2. Specification intended state	<ol style="list-style-type: none"> 1. Identification of quality needs 2. Assessment of relative importance 3. Identification of requirements
3. Assessment actual state	<ol style="list-style-type: none"> 4. Assessment of current level of service
4. Identification of deficits and remedies	<ol style="list-style-type: none"> 5. Assessment of compliance and satisfaction 6. Identification of C & S mechanisms 7. Identification of promising Interventions
5. Decision on interventions	<ol style="list-style-type: none"> 8. Assessment of potential PQ system output 9. Formulation of recommendations for input / plan 10. Identification of Gaps in Knowledge and Best Practices



COST 358

Pedestrians' Quality Needs

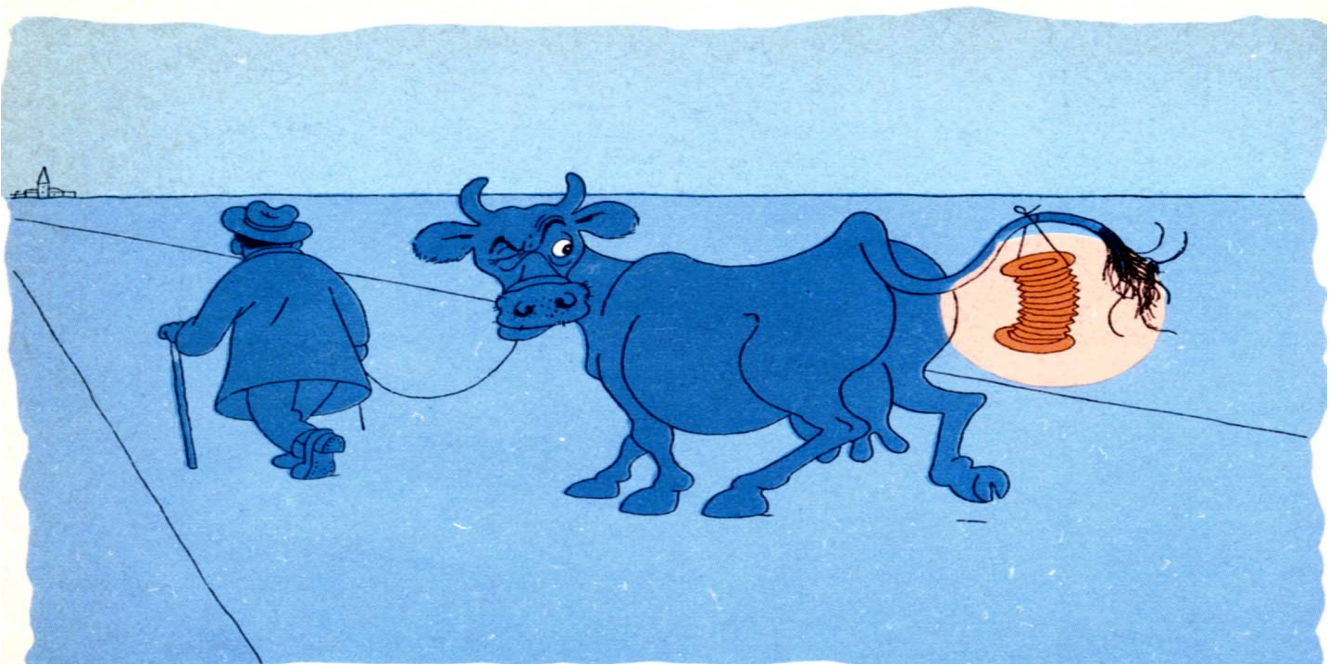
Some preliminary findings

- Proactive/generative approach differs fundamentally
- Data availability a problem
- Synergy with other projects is improving
- Success = quality academic work + creative ideas
- Towards a Handbook or expert system?
- Content results: see website www.walkeurope.org



COST 358

Thank you for your attention!





COST 358

Pedestrians' Quality Needs

Colofon

Author:

Rob Methorst
DVS Centre for Transport and Navigation
PO Box 1032
3000 BA Rotterdam, The Netherlands

E-mail:

rob.methorst@rws.nl

Telephone:

+ 31 10 282 5737

Websites:

www.walkeurope.org

www.rws-avv.nl; www.rijkswaterstaat.nl