

# The Path to Walking Success? Key Walking Routes



Spencer Clark



Transport for London



## Agenda

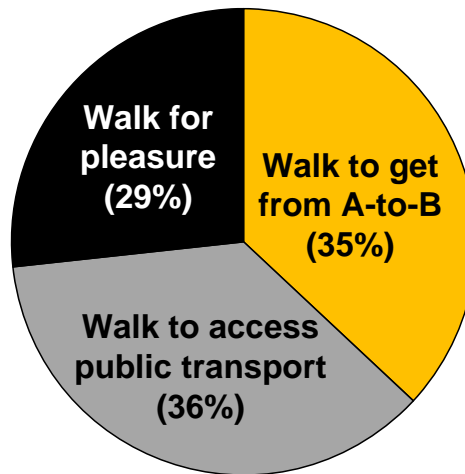
- **Walking in London, barriers & potential**
- **Making Walking Count**
- **Key Walking Routes Policy**
- **Key Walking Route examples**
- **Summary**



Transport for London



# Walking in London



Quarter of all trips

15.4 million journeys per day



Transport for London 

## The Potential for more

**Tube** - 20,000 tube trips per day would be quicker to walk

**Car** - 1.7 million car journeys under 1km are made everyday

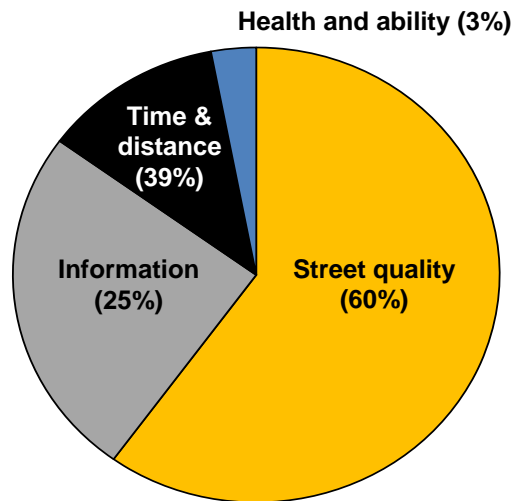
**Geography** - 80% of potential for more is in outer London



Transport for London 

# Barriers to Walking

Everyday walking



Everyday walking accounts for 71% of walking trips



Transport for London



# Making Walking Count



The Mayor's Transport Strategy:

*'A step change in the walking experience'*

The Mayor supports:

- Co-ordination across partners
- An improvement in conditions**
- More walking in London



Transport for London



# Making Walking Count

## *Everyday walking:*

- Key Walking Routes
- Legible London

## *Leisure walking:*

- Strategic Walk Network = Walk London

## *Looking forward:*

- 2011 Year of Walking
- High profile events & activities



Transport for London 

## The past....

Piecemeal

Isolated

Lack impact

Un co-ordinated with other modes



Transport for London 

# Key Walking Routes

- Target the Street Quality barrier
- Link important local destinations
- Sold as public space improvements
- Package multiple improvements at the same time
- An integrated approach.....



## Castle Street, Kingston

Connect rail station & town centre

Support local businesses & economic regeneration

Reduce dominance & impact of motor traffic

Deliver step change in walking conditions



# Castle Street, Kingston



Transport for London 

# Castle Street, Kingston

## *Results*

+ 12% more walking daily  
(+ women & elderly people)

More public space + used by people

(+ Sitting and eating, reading + browsing)



Transport for London 

# Wanstead High Street, Redbridge

Tackle personal safety barriers

Routes to local shops & public transport

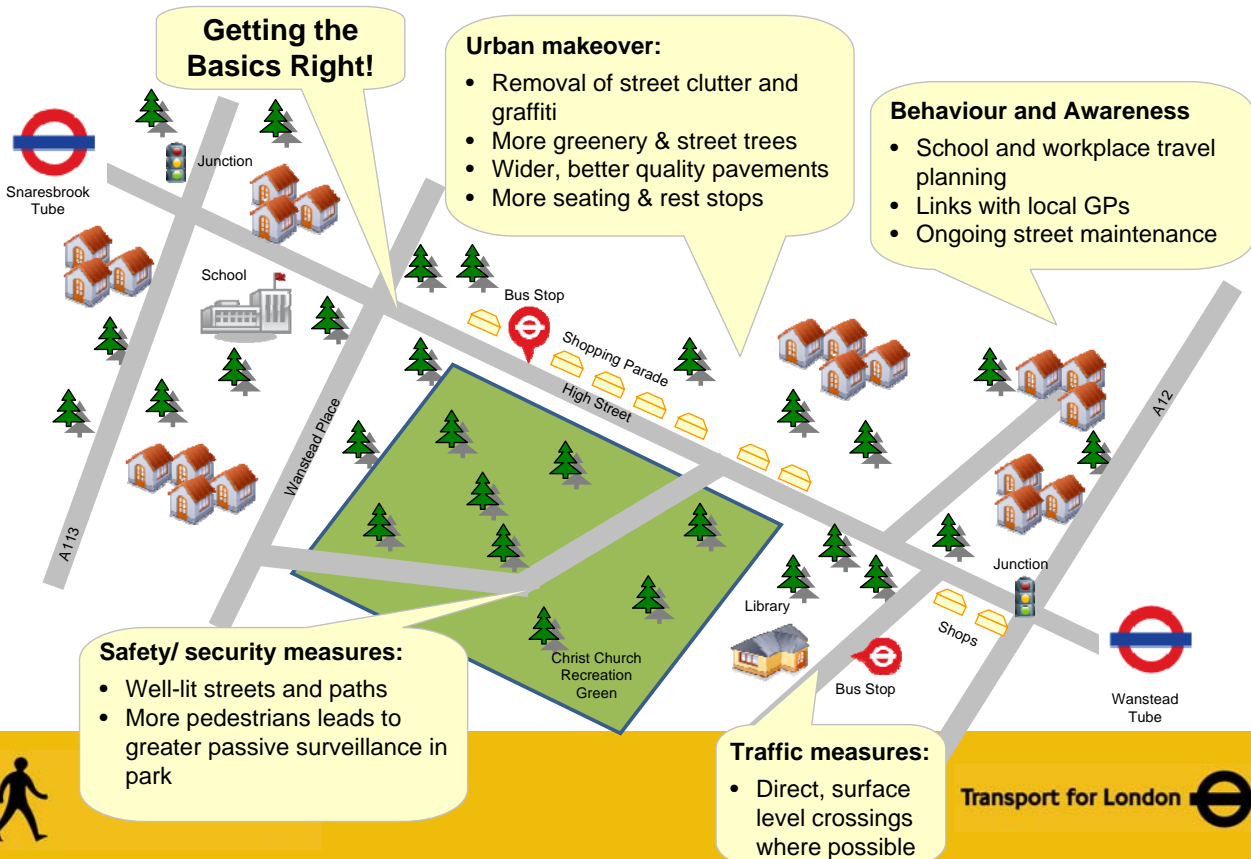
Focus on lighting & CCTV

Supported by footway improvements, new crossings

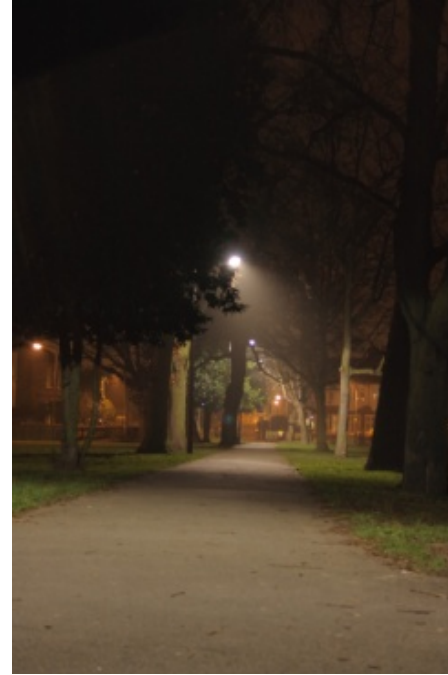
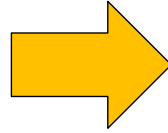
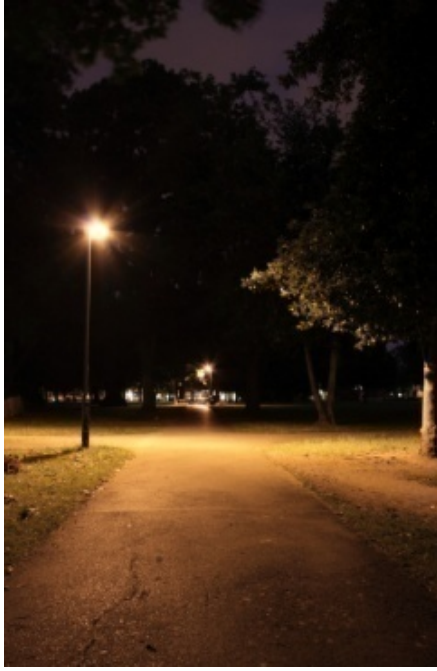
Refurbished local landmarks to support place-making



## Wanstead High Street



# Wanstead High Street



Transport for London



# Wanstead High Street

## *Results*

+ 75% using the local park during the day

+ 122% at night

+ Women & elderly



Transport for London



# Clear Zone Corridor

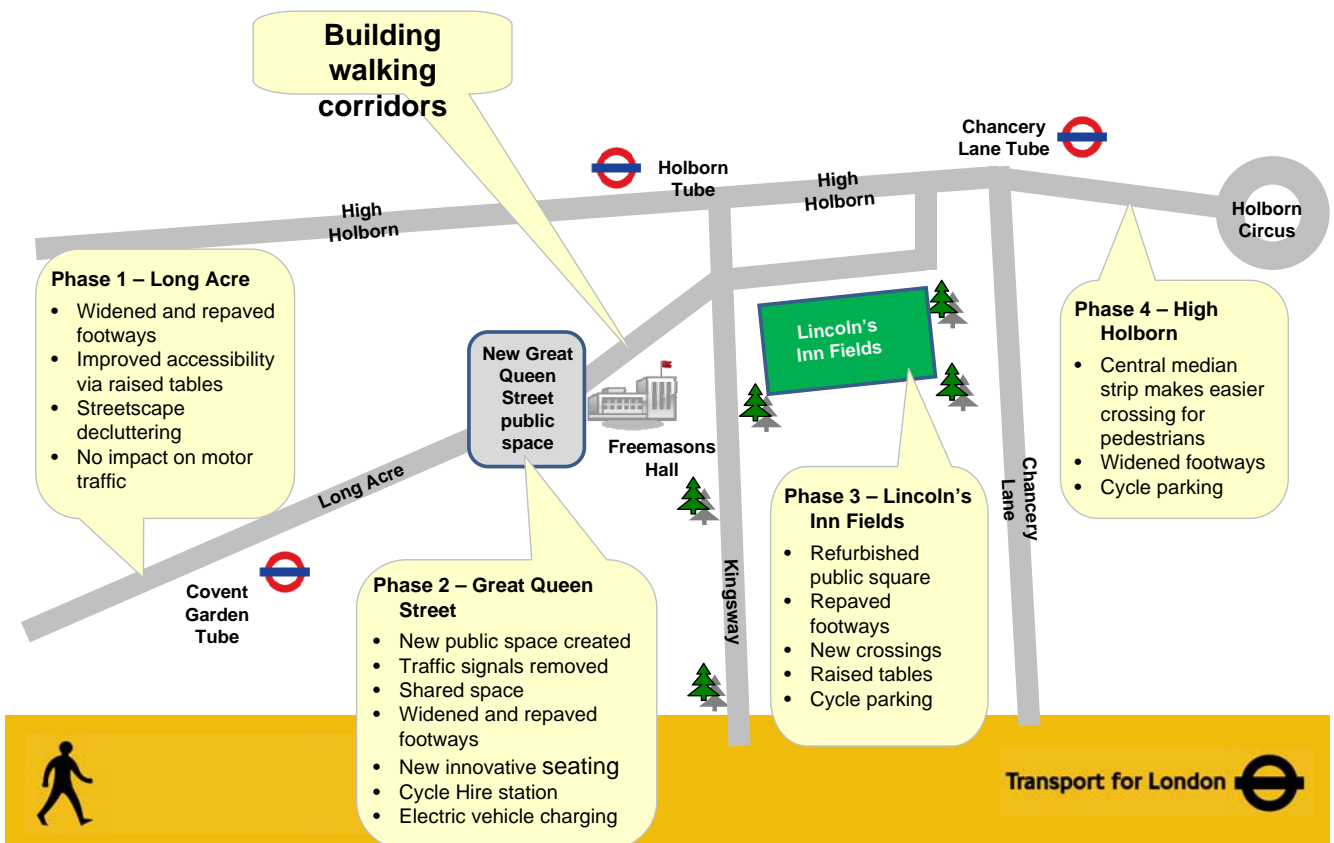
Support local businesses & retail

Support natural desire lines & flows

Create new public space

Comprehensive street makeovers

## Clear Zones Corridor



# Phase 1 - Long Acre



# Phase 2 - Great Queen Street



# Phase 3 - High Holborn



# Clear Zone Corridor



# Phase 1 - Long Acre

## Results

+ Support footfall for local businesses = + support

-20% Crowding perceptions

+ 32% women

27% perceive less traffic and slower cars



Transport for London 

# Redcross Way, Southwark

To encourage walking to school

Support natural pedestrian desire lines & flows

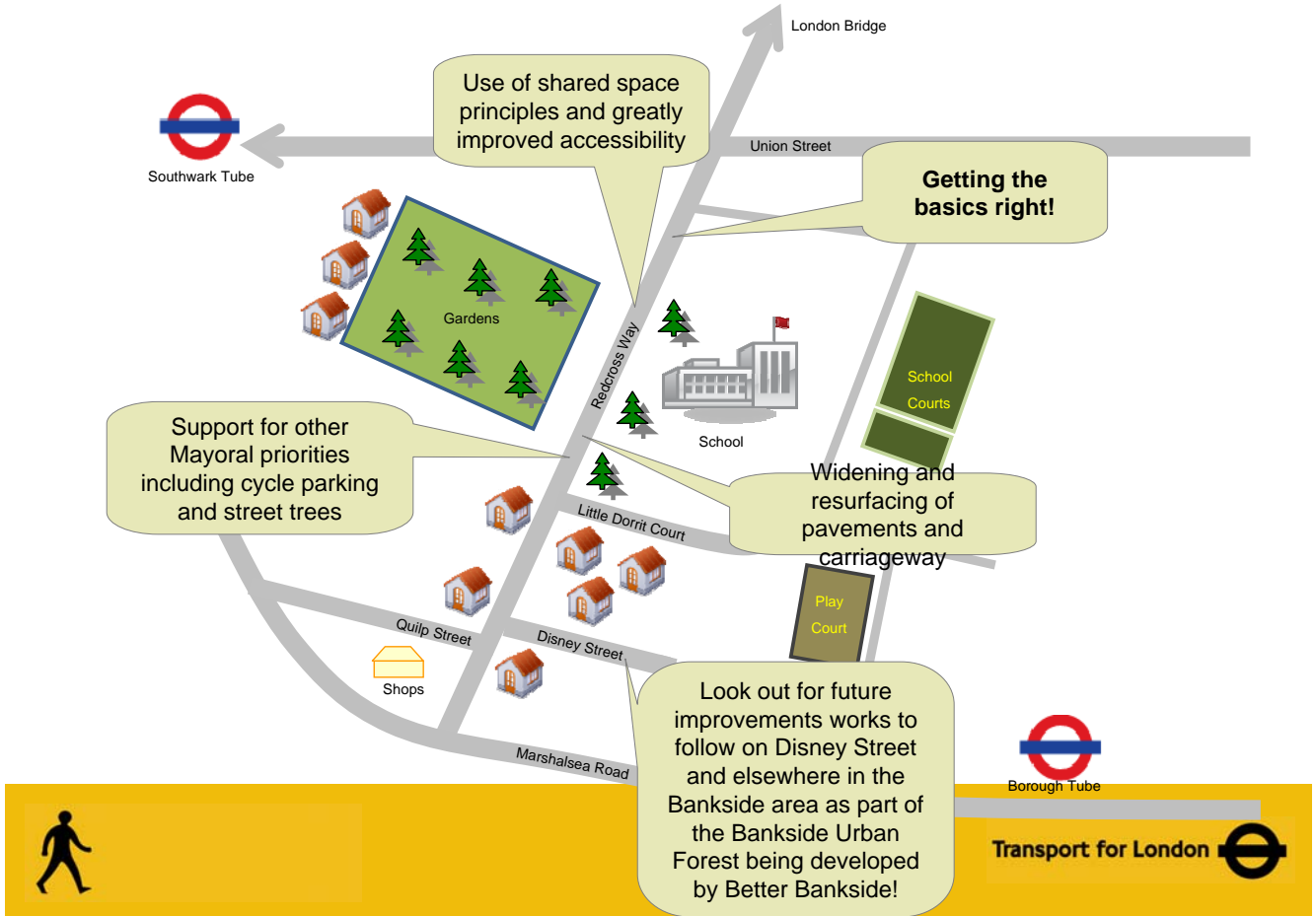
Link public gardens to community

Create a sense of place



Transport for London 

# Redcross Way



## Redcross Way, Southwark



# Redcross Way

## *Future Plans*

Extend street makeover northwards on desire line

Expand treatments to surrounding neighbourhood

Counters to capture flow levels

Support physical changes with behaviour change messages



Transport for London



## Future plans for Key Walking Routes

- Expand programme
- Monitor more schemes to build understanding
- Publicise completing schemes more widely
- Link to behaviour change programmes



Transport for London



# Summary

- Key walking routes support more people to walk
- Key walking routes flexibility allows them to be tailored to the location & needs of local communities
- Monitoring is important but should match objectives.



Transport for London 



Thank you and questions!

[www.tfl.gov.uk](http://www.tfl.gov.uk) / [Spencer.clark@tfl.gov.uk](mailto:Spencer.clark@tfl.gov.uk)



Transport for London 